

LEVEL GAUGE SPECIFICATION

 SAMIL INDUSTRY CO., LTD.

No.	Tag No.	Q'ty	Model	Vessel Connection Size	C to C	Visible Length	Glass Size	Size No. Glass Sec	Hook-up / Orientation	Sp.Gr (Up/Lo)	Float Length	L	Indicator Color	Material					Fluid UP / LO	DRAIN	VENT	Options Code	P.Bar.G(A)		Temp°C		TestP.Bar.G			Page	Remark		
														Gauge Body	Float	Bolt	Gasket & Gland Packing	Glass					Op.	Op.	Hyd	Pneu							
																											Valve Body	Trim	Nut			Des.	Des.
1	2-51-LG-1023	1	STG-2IL	1" ANSI 300# RF	1030	755	250	6x3	TB	-	-	-	-	A516GR.70	-	A193-B7	GRAPHITE & GRAPHITE	ST	Steam Cond	1/2" NPT	1/2" NPT	S1,L1	-	-	41	N/A	5,9,10						
									180					A105	316LSS	A194-2H							27/FV	315									
2	2-51-LG-1057	1	SRG-2	2" ANSI 300# RF	750	550	340	7x2	TB	-	-	-	-	A516GR.70	-	A193-B7	GRAPHITE & GRAPHITE	ST	METHANOL	1/2" NPT	1/2" NPT	S1	-	-	61	N/A	1,9						
									180					A105	316LSS	A194-2H							40.5/FV	200									
3	2-65-LG-6501	1	SRG-1	1" ANSI 300# RF	1530	1300	320	8x4	TB	-	-	-	-	A516GR.70	-	A193-B7	GRAPHITE & GRAPHITE	ST	Steam Cond	1/2" NPT	1/2" NPT	S1	-	-	15	N/A	1,9						
									180					A105	316LSS	A194-2H							3.5/FV	-25/175									
4	2-65-LG-6504	1	SRG-1	1" ANSI 300# RF	1530	1300	320	8x4	TB	-	-	-	-	A516GR.70	-	A193-B7	GRAPHITE & GRAPHITE	ST	HYDROCARBON LIQUID	1/2" NPT	1/2" NPT	S1	-	-	28	N/A	1,9						
									180					A105	316LSS	A194-2H							18.4/FV	-25/77									
5	2-66-LG-6601	1	SRG-1	2" ANSI 300# RF	780	550	280	7x2	TB	-	-	-	-	A516GR.70	-	A193-B7	GRAPHITE & GRAPHITE	ST	PLANT AIR	1/2" NPT	1/2" NPT	S1	-	-	27	N/A	1,9						
									180					A105	316LSS	A194-2H							17.8	185									
6	2-66-LG-6602	1	SRG-1	1" ANSI 300# RF	780	550	280	7x2	TB	-	-	-	-	A516GR.70	-	A193-B7	GRAPHITE & GRAPHITE	ST	PLANT AIR	1/2" NPT	1/2" NPT	S1	-	-	16	N/A	1,9						
									180					A105	316LSS	A194-2H							10.6	-25/77									
7	2-87-LG-8703	1	SRG-1	1" ANSI 300# RF	830	630	320	8x2	TB	-	-	-	-	A516GR.70	-	A193-B7	GRAPHITE & GRAPHITE	ST	WATER / HYDROCARBON LIQUID	1/2" NPT	1/2" NPT	S1	-	-	15	N/A	1,9						
									180					A105	316LSS	A194-2H							5.09	-25/385									
8	2-62-LI-6225	1	SRG-1	1" ANSI 300# RF	1330	1025	340	9x3	TB	-	-	-	-	A516GR.70	-	A193-B7	GRAPHITE & GRAPHITE	ST	DEMINE WATER	1/2" NPT	1/2" NPT	S1	-	-	15	N/A	1,9						
									180					A105	316LSS	A194-2H							ATM	77									
9	2-87-LG-8705	1	SRNG-1	1" ANSI 300# RF	1180	965	320	8x3	TB	-	-	-	-	A516GR.70	-	A320-L7	GRAPHITE & GRAPHITE	ST	AMMONIA	1/2" NPT	1/2" NPT	S1, F2	-	-	15	N/A	2,7						
									180					A350LF2	316LSS	A194-7							5.09	-41/120									
10	2-87-LG-8707	1	SRNG-1	1" ANSI 300# RF	1630	1400	340	9x4	TB	-	-	-	-	A516GR.70	-	A320-L7	GRAPHITE & GRAPHITE	ST	AMMONIA	1/2" NPT	1/2" NPT	S1, F2	-	-	15	N/A	2,7						
									180					A350LF2	316LSS	A194-7							5.09	-41/120									
11	2-21-LG-1197	1	STG-1IL	1" ANSI 300# RF	530	315	340	9x1	TB	-	-	-	-	A516GR.70	-	A193-B7	GRAPHITE & GRAPHITE	ST	Steam Cond	1/2" NPT	1/2" NPT	S1,M2, L1	-	-	15	N/A	5-1, 9,10						
									180					A105	316LSS	A194-2H							7.1/FV	315/-27									
12	2-21-LG-1608A	1	SRG-2	1" ANSI 300# RF	1030	755	250	6x3	TB	-	-	-	-	A516GR.70	-	A193-B7	GRAPHITE & GRAPHITE	ST	Synth/Gas/ Cond	1/2" NPT	1/2" NPT	S1	-	-	51	N/A	1,9						
									180					A105	316LSS	A194-2H							34	80									
13	2-21-LG-1608B	1	SRG-2	1" ANSI 300# RF	1030	755	250	6x3	TB	-	-	-	-	A516GR.70	-	A193-B7	GRAPHITE & GRAPHITE	ST	Synth/Gas/ Cond	1/2" NPT	1/2" NPT	S1	-	-	51	N/A	1,9						
									180					A105	316LSS	A194-2H							34	80									
14	2-21-LG-1609	1	SRNG-1	1" ANSI 300# RF	1180	965	320	8x3	TB	-	-	-	-	A516GR.70	-	A193-B7	GRAPHITE & GRAPHITE	ST	Ammonia	1/2" NPT	1/2" NPT	S1, F2	-	-	25	N/A	2-1,9						
									180					A105	316LSS	A194-2H							16.5	60/-27									
15	2-21-LG-1612	1	SRNG-1	1" ANSI 300# RF	1030	755	250	6x3	TB	-	-	-	-	A516GR.70	-	A193-B7	GRAPHITE & GRAPHITE	ST	Ammonia	1/2" NPT	1/2" NPT	S1, F2	-	-	28	N/A	2-1,9						
									180					A105	316LSS	A194-2H							18.5	60/-25									
16	2-21-LG-1615A	1	SRNG-1	1" ANSI 300# RF	1030	755	250	6x3	TB	-	-	-	-	A516GR.70	-	A193-B7	GRAPHITE & GRAPHITE	ST	Ammonia	1/2" NPT	1/2" NPT	S1, F2	-	-	25	N/A	2-1,9						
									180					A105	316LSS	A194-2H							16.5	130/-25									
17	2-21-LG-1615B	1	SRNG-1	1" ANSI 300# RF	1030	755	250	6x3	TB	-	-	-	-	A516GR.70	-	A193-B7	GRAPHITE & GRAPHITE	ST	Ammonia	1/2" NPT	1/2" NPT	S1, F2	-	-	25	N/A	2-1,9						
									180					A105	316LSS	A194-2H							16.5	130/-25									
18	2-21-LG-1621A	1	SRNG-1	1" ANSI 300# RF	867	630	320	8x2	TB	-	-	-	-	A516GR.70	-	A193-B7	GRAPHITE & GRAPHITE	ST	Ammonia	1/2" NPT	1/2" NPT	S1, F2	-	-	25	N/A	2-1,9						
									180					A105	316LSS	A194-2H							16.5	60/-29									
19	2-21-LG-1621B	1	SRNG-1	1" ANSI 300# RF	1204	965	320	8x3	TB	-	-	-	-	A516GR.70	-	A193-B7	GRAPHITE & GRAPHITE	ST	Ammonia	1/2" NPT	1/2" NPT	S1, F2	-	-	25	N/A	2-1,9						
									180					A105	316LSS	A194-2H							16.5	60/-29									
20	2-21-LG-1622A	1	SRNG-1	1" ANSI 300# RF	867	630	320	8x2	TB	-	-	-	-	A516GR.70	-	A193-B7	GRAPHITE & GRAPHITE	ST	Ammonia	1/2" NPT	1/2" NPT	S1, F2	-	-	25	N/A	2-1,9						
									180					A105	316LSS	A194-2H							16.5	60/-29									

LEVEL GAUGE SPECIFICATION

 SAMIL INDUSTRY CO., LTD.

No.	Tag No.	Q'ty	Model	Vessel Connection Size	C to C	Visible Length	Glass Size	Size No. Glass Sec	Hook-up / Orientation	Sp.Gr (Up/Lo)	Float Length	L	Indicator Color	Material					Fluid UP / LO	DRAIN	VENT	Options Code	P.Bar.G(A)		Temp°C		TestP.Bar.G			Page	Remark
														Gauge Body	Float	Bolt	Gasket & Gland Packing	Glass					Op.	Op.	Hyd	Pneu					
																											Valve Body	Trim	Nut		
														Des.	Des.	Des.	Des.	Des.													
21	2-21-LG-1622B	1	SRNG-1	1" ANSI 300# RF	1204	965	320	8x3	TB	-	-	-	-	A516GR.70	-	A193-B7	GRAPHITE & GRAPHITE	ST	Ammonia	1/2" NPT	1/2" NPT	S1, F2	-	-	25	N/A	2-1,9				
									180					A105	316LSS	A194-2H							16.5	60/-29							
22	2-21-LG-1623A	1	SRNG-1	1" ANSI 300# RF	867	630	320	8x2	TB	-	-	-	-	A516GR.70	-	A193-B7	GRAPHITE & GRAPHITE	ST	Ammonia	1/2" NPT	1/2" NPT	S1, F2	-	-	25	N/A	2-1,9				
									180					A105	316LSS	A194-2H							16.5	60/-29							
23	2-21-LG-1623B	1	SRNG-1	1" ANSI 300# RF	1204	965	320	8x3	TB	-	-	-	-	A516GR.70	-	A193-B7	GRAPHITE & GRAPHITE	ST	Ammonia	1/2" NPT	1/2" NPT	S1, F2	-	-	25	N/A	2-1,9				
									180					A105	316LSS	A194-2H							16.5	60/-29							
24	2-21-LG-1626	1	SRNG-1	1" ANSI 300# RF	2350	2090	340	9x6	TB	-	-	-	-	A516GR.70	-	A193-B7	GRAPHITE & GRAPHITE	ST	Aqueous NH3	1/2" NPT	1/2" NPT	S1, F2	-	-	20	N/A	2-1,9				
									180					A105	316LSS	A194-2H							13/FV	77/-29							
25	2-21-LG-1627A	1	SRG-1	1" ANSI 300# RF	1180	965	320	8x3	TB	-	-	-	-	A516GR.70	-	A193-B7	GRAPHITE & GRAPHITE	ST	Aqueous NH3	1/2" NPT	1/2" NPT	S1	-	-	31	N/A	1,9				
									180					A105	316LSS	A194-2H							20.5/FV	230							
26	2-21-LG-1627B	1	SRG-1	1" ANSI 300# RF	1180	965	320	8x3	TB	-	-	-	-	A516GR.70	-	A193-B7	GRAPHITE & GRAPHITE	ST	Aqueous NH3	1/2" NPT	1/2" NPT	S1	-	-	31	N/A	1,9				
									180					A105	316LSS	A194-2H							20.5/FV	230							
27	2-21-LG-1629	1	STG-1IL	1" ANSI 300# RF	1530	1300	320	8x4	TB	-	-	-	-	A516GR.70	-	A193-B7	GRAPHITE & GRAPHITE	ST	Steam Cond	1/2" NPT	1/2" NPT	S1,M2, L1	-	-	15	N/A	5-1, 9,10				
									180					A105	316LSS	A194-2H							7.1/FV	175/-25							
28	2-21-LG-1632	1	SRNG-2	1" ANSI 300# RF	1030	755	250	6x3	TB	-	-	-	-	A516GR.70	-	A193-B7	GRAPHITE & GRAPHITE	ST	Process Cond	1/2" NPT	1/2" NPT	S1, F2	-	-	55	N/A	2-1,9				
									180					A105	316LSS	A194-2H							36.6	105/-25							
29	2-21-LG-1650	1	SRG-1	1" ANSI 300# RF	1630	1400	340	9x4	TB	-	-	-	-	A516GR.70	-	A193-B7	GRAPHITE & GRAPHITE	ST	FG/Cond	1/2" NPT	1/2" NPT	S1	-	-	20	N/A	1,9				
									180					A105	316LSS	A194-2H							13	77							
30	2-21-LG-1651	1	SRNG-1	1" ANSI 300# RF	1630	1400	340	9x4	TB	-	-	-	-	A516GR.70	-	A193-B7	GRAPHITE & GRAPHITE	ST	FG/Cond	1/2" NPT	1/2" NPT	S1, F2	-	-	20	N/A	2-1,9				
									180					A105	316LSS	A194-2H							13	77/-29							
31	2-21-LG-1652	1	SRG-2	1" ANSI 300# RF	1630	1400	340	9x4	TB	-	-	-	-	A516GR.70	-	A193-B7	GRAPHITE & GRAPHITE	ST	Syn Gas/Cond	1/2" NPT	1/2" NPT	S1	-	-	55	N/A	1,9				
									180					A105	316LSS	A194-2H							36.6	105							
32	2-21-LG-1741	1	STG-1IL	1" ANSI 300# RF	1530	1300	320	8x4	TB	-	-	-	-	A516GR.70	-	A193-B7	GRAPHITE & GRAPHITE	ST	Steam Cond	1/2" NPT	1/2" NPT	S1,M2, L1	-	-	15	N/A	5-1, 9,10				
									180					A105	316LSS	A194-2H							4.6	160							
33	2-21-LG-1742	1	STG-1IL	1" ANSI 300# RF	1030	755	250	6x3	TB	-	-	-	-	A516GR.70	-	A193-B7	GRAPHITE & GRAPHITE	ST	Steam Cond	1/2" NPT	1/2" NPT	S1,M2, L1	-	-	15	N/A	5-1, 9,10				
									180					A105	316LSS	A194-2H							4.6	160							
34	2-21-LG-6630A	1	STG-1IL	1" ANSI 300# RF	1180	965	320	8x3	TB	-	-	-	-	A516GR.70	-	A193-B7	GRAPHITE & GRAPHITE	ST	BFW	1/2" NPT	1/2" NPT	S1,L1	-	-	15	N/A	5,9,10				
									180					A105	316LSS	A194-2H							3.5/FV	315							
35	2-21-LG-6630B	1	STG-1IL	1" ANSI 300# RF	1180	965	320	8x3	TB	-	-	-	-	A516GR.70	-	A193-B7	GRAPHITE & GRAPHITE	ST	BFW	1/2" NPT	1/2" NPT	S1,L1	-	-	15	N/A	5,9,10				
									180					A105	316LSS	A194-2H							3.5/FV	315							
36	2-21-LG-6630C	1	STG-1IL	1" ANSI 300# RF	1180	965	320	8x3	TB	-	-	-	-	A516GR.70	-	A193-B7	GRAPHITE & GRAPHITE	ST	BFW	1/2" NPT	1/2" NPT	S1,L1	-	-	15	N/A	5,9,10				
									180					A105	316LSS	A194-2H							3.5/FV	315							
37	2-21-LG-1603A	1	STNG-2IL	1" ANSI 300# RF	1330	1025	340	9x3	TB	-	-	-	-	A276TYPE304	-	A193-B8	GRAPHITE & GRAPHITE	ST	Process/Cond	1/2" NPT	1/2" NPT	S1, F2, L1,M2	-	-	55	N/A	6,9,10				
									180					A182F304	316LSS	A194-8							36.6	140/-25							
38	2-21-LG-1603B	1	STNG-2IL	1" ANSI 300# RF	1330	1025	340	9x3	TB	-	-	-	-	A276TYPE304	-	A193-B8	GRAPHITE & GRAPHITE	ST	Process/Cond	1/2" NPT	1/2" NPT	S1, F2, L1,M2	-	-	55	N/A	6,9,10				
									180					A182F304	316LSS	A194-8							36.6	140/-25							
39	2-21-LG-1604A	1	STNG-2IL	1" ANSI 300# RF	1630	1400	340	9x4	TB	-	-	-	-	A276TYPE304	-	A193-B8	GRAPHITE & GRAPHITE	ST	aMDEA Sol.	1/2" NPT	1/2" NPT	S1, F2, L1,M2	-	-	55	N/A	6,9,10				
									180					A182F304	316LSS	A194-8							36.6/FV	105/-25							
40	2-21-LG-1604B	1	STNG-2IL	1" ANSI 300# RF	1630	1400	340	9x4	TB	-	-	-	-	A276TYPE304	-	A193-B8	GRAPHITE & GRAPHITE	ST	aMDEA Sol.	1/2" NPT	1/2" NPT	S1, F2, L1,M2	-	-	55	N/A	6,9,10				
									180					A182F304	316LSS	A194-8							36.6/FV	105/-25							

LEVEL GAUGE SPECIFICATION

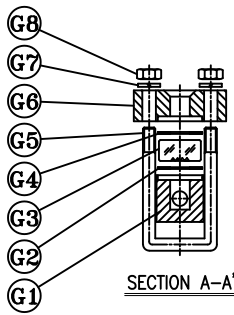
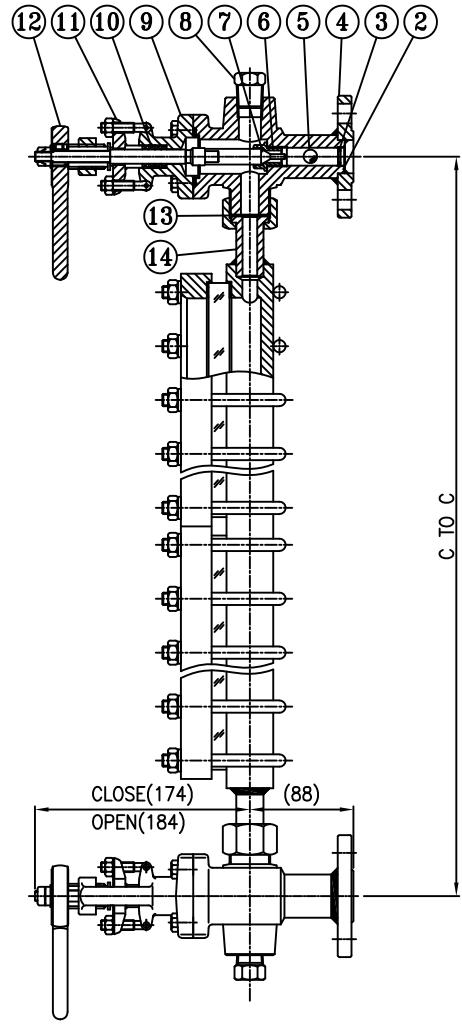
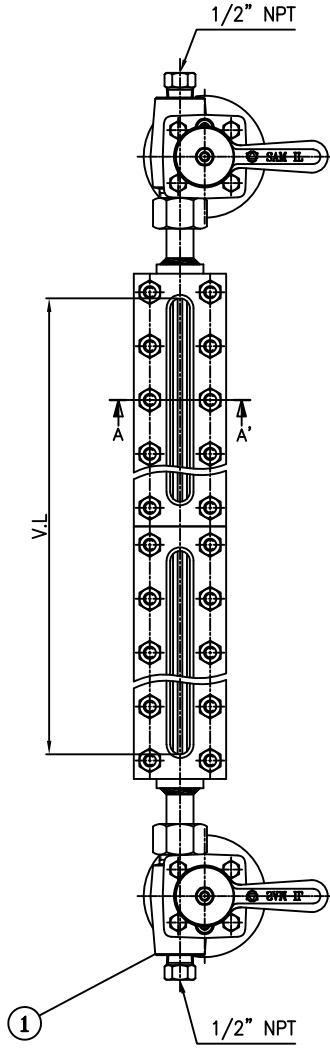
 SAMIL INDUSTRY CO., LTD.

No.	Tag No.	Q'ty	Model	Vessel Connection Size	C to C	Visible Length	Glass Size	Size No. Glass Sec	Hook-up / Orientation	Sp.Gr (Up/Lo)	Float Length	L	Indicator Color	Material					Fluid UP / LO	DRAIN	VENT	Options Code	P.Bar.G(A)		Temp°C		TestP.Bar.G			Page	Remark		
														Gauge Body	Float	Bolt	Gasket & Gland Packing	Glass					Op.	Op.	Hyd	Pneu							
																											Valve Body	Trim	Nut			Des.	Des.
41	2-21-LG-1604D	1	STNG-2IL	1" ANSI 300# RF	1530	1300	320	8x4	TB	-	-	-	-	A276TYPE304	-	A193-B8	GRAPHITE & GRAPHITE	ST	aMDEA Sol.	1/2" NPT	1/2" NPT	S1, F2, L1,M2	-	-	55	N/A	6,9,10						
									180					A182F304	316LSS	A194-8	GRAPHITE & GRAPHITE	ST	aMDEA Sol.	1/2" NPT	1/2" NPT	S1, F2, L1,M2	36.6/FV	105/-25	55	N/A	6,9,10						
42	2-21-LG-1604E	1	STNG-2IL	1" ANSI 300# RF	1530	1300	320	8x4	TB	-	-	-	-	A276TYPE304	-	A193-B8	GRAPHITE & GRAPHITE	ST	aMDEA Sol.	1/2" NPT	1/2" NPT	S1, F2, L1,M2	-	-	55	N/A	6,9,10						
									180					A182F304	316LSS	A194-8	GRAPHITE & GRAPHITE	ST	aMDEA Sol.	1/2" NPT	1/2" NPT	S1, F2, L1,M2	36.6/FV	105/-25	55	N/A	6,9,10						
43	2-21-LG-1604F	1	STNG-2IL	1" ANSI 300# RF	1530	1300	320	8x4	TB	-	-	-	-	A276TYPE304	-	A193-B8	GRAPHITE & GRAPHITE	ST	aMDEA Sol.	1/2" NPT	1/2" NPT	S1, F2, L1,M2	-	-	55	N/A	6,9,10						
									180					A182F304	316LSS	A194-8	GRAPHITE & GRAPHITE	ST	aMDEA Sol.	1/2" NPT	1/2" NPT	S1, F2, L1,M2	36.6/FV	105/-25	55	N/A	6,9,10						
44	2-21-LG-1640	1	STNG-1IL	1" ANSI 300# RF	2350	2090	340	9x6	TB	-	-	-	-	A276TYPE304	-	A193-B8	GRAPHITE & GRAPHITE	ST	aMDEA Sol.	1/2" NPT	1/2" NPT	S1, F2, L1,M2	-	-	15	N/A	6,9,10						
									180					A182F304	316LSS	A194-8	GRAPHITE & GRAPHITE	ST	aMDEA Sol.	1/2" NPT	1/2" NPT	S1, F2, L1,M2	3.5/FV	140/-25	15	N/A	6,9,10						
45	2-21-LG-1641A	1	STNG-1IL	1" ANSI 300# RF	1630	1400	340	9x4	TB	-	-	-	-	A276TYPE304	-	A193-B8	GRAPHITE & GRAPHITE	ST	aMDEA Sol.	1/2" NPT	1/2" NPT	S1, F2, L1,M2	-	-	15	N/A	6,9,10						
									180					A182F304	316LSS	A194-8	GRAPHITE & GRAPHITE	ST	aMDEA Sol.	1/2" NPT	1/2" NPT	S1, F2, L1,M2	3.5/FV	140/-25	15	N/A	6,9,10						
46	2-21-LG-1641B	1	STNG-1IL	1" ANSI 300# RF	1630	1400	340	9x4	TB	-	-	-	-	A276TYPE304	-	A193-B8	GRAPHITE & GRAPHITE	ST	aMDEA Sol.	1/2" NPT	1/2" NPT	S1, F2, L1,M2	-	-	15	N/A	6,9,10						
									180					A182F304	316LSS	A194-8	GRAPHITE & GRAPHITE	ST	aMDEA Sol.	1/2" NPT	1/2" NPT	S1, F2, L1,M2	3.5/FV	140/-25	15	N/A	6,9,10						
47	2-21-LG-1641C	1	STNG-1IL	1" ANSI 300# RF	1630	1400	340	9x4	TB	-	-	-	-	A276TYPE304	-	A193-B8	GRAPHITE & GRAPHITE	ST	aMDEA Sol.	1/2" NPT	1/2" NPT	S1, F2, L1,M2	-	-	15	N/A	6,9,10						
									180					A182F304	316LSS	A194-8	GRAPHITE & GRAPHITE	ST	aMDEA Sol.	1/2" NPT	1/2" NPT	S1, F2, L1,M2	3.5/FV	140/-25	15	N/A	6,9,10						
48	2-21-LG-1642A	1	STNG-1IL	1" ANSI 300# RF	1630	1400	340	9x4	TB	-	-	-	-	A276TYPE304	-	A193-B8	GRAPHITE & GRAPHITE	ST	aMDEA Sol.	1/2" NPT	1/2" NPT	S1, F2, L1,M2	-	-	15	N/A	6,9,10						
									180					A182F304	316LSS	A194-8	GRAPHITE & GRAPHITE	ST	aMDEA Sol.	1/2" NPT	1/2" NPT	S1, F2, L1,M2	3.5/FV	140/-25	15	N/A	6,9,10						
49	2-21-LG-1642B	1	STNG-1IL	1" ANSI 300# RF	1630	1400	340	9x4	TB	-	-	-	-	A276TYPE304	-	A193-B8	GRAPHITE & GRAPHITE	ST	aMDEA Sol.	1/2" NPT	1/2" NPT	S1, F2, L1,M2	-	-	15	N/A	6,9,10						
									180					A182F304	316LSS	A194-8	GRAPHITE & GRAPHITE	ST	aMDEA Sol.	1/2" NPT	1/2" NPT	S1, F2, L1,M2	3.5/FV	140/-25	15	N/A	6,9,10						
50	2-21-LG-1642C	1	STNG-1IL	1" ANSI 300# RF	1630	1400	340	9x4	TB	-	-	-	-	A276TYPE304	-	A193-B8	GRAPHITE & GRAPHITE	ST	aMDEA Sol.	1/2" NPT	1/2" NPT	S1, F2, L1,M2	-	-	15	N/A	6,9,10						
									180					A182F304	316LSS	A194-8	GRAPHITE & GRAPHITE	ST	aMDEA Sol.	1/2" NPT	1/2" NPT	S1, F2, L1,M2	3.5/FV	140/-25	15	N/A	6,9,10						
51	2-21-LG-1642D	1	STNG-1IL	1" ANSI 300# RF	1630	1400	340	9x4	TB	-	-	-	-	A276TYPE304	-	A193-B8	GRAPHITE & GRAPHITE	ST	aMDEA Sol.	1/2" NPT	1/2" NPT	S1, F2, L1,M2	-	-	15	N/A	6,9,10						
									180					A182F304	316LSS	A194-8	GRAPHITE & GRAPHITE	ST	aMDEA Sol.	1/2" NPT	1/2" NPT	S1, F2, L1,M2	3.5/FV	140/-25	15	N/A	6,9,10						
52	2-21-LG-1642E	1	STNG-1IL	1" ANSI 300# RF	1630	1400	340	9x4	TB	-	-	-	-	A276TYPE304	-	A193-B8	GRAPHITE & GRAPHITE	ST	aMDEA Sol.	1/2" NPT	1/2" NPT	S1, F2, L1,M2	-	-	15	N/A	6,9,10						
									180					A182F304	316LSS	A194-8	GRAPHITE & GRAPHITE	ST	aMDEA Sol.	1/2" NPT	1/2" NPT	S1, F2, L1,M2	3.5/FV	140/-25	15	N/A	6,9,10						
53	2-21-LG-1616	1	SRNG-1	1" ANSI 300# RF	530	315	340	9x1	TB	-	-	-	-	A276TYPE304	-	A193-B8	GRAPHITE & GRAPHITE	ST	Ammonia	1/2" NPT	1/2" NPT	S1, F2	-	-	25	N/A	2-2,9						
									180					A182F304	316LSS	A194-8	GRAPHITE & GRAPHITE	ST	Ammonia	1/2" NPT	1/2" NPT	S1, F2	16.5	77/-41	25	N/A	2-2,9						
54	2-21-LG-1624A	1	SRNG-1	1" ANSI 300# RF	867	630	320	8x2	TB	-	-	-	-	A276TYPE304	-	A193-B8	GRAPHITE & GRAPHITE	ST	Ammonia	1/2" NPT	1/2" NPT	S1, F2	-	-	25	N/A	2-2,9						
									180					A182F304	316LSS	A194-8	GRAPHITE & GRAPHITE	ST	Ammonia	1/2" NPT	1/2" NPT	S1, F2	16.5/FV	60/-41	25	N/A	2-2,9						
55	2-21-LG-1624B	1	SRNG-1	1" ANSI 300# RF	1204	965	320	8x3	TB	-	-	-	-	A276TYPE304	-	A193-B8	GRAPHITE & GRAPHITE	ST	Ammonia	1/2" NPT	1/2" NPT	S1, F2	-	-	25	N/A	2-2,9						
									180					A182F304	316LSS	A194-8	GRAPHITE & GRAPHITE	ST	Ammonia	1/2" NPT	1/2" NPT	S1, F2	16.5/FV	60/-41	25	N/A	2-2,9						
56	2-21-LG-1098	1	SRG-1	1" ANSI 300# RF	1030	755	250	6x3	TB	-	-	-	-	A276TYPE304	-	A193-B8	GRAPHITE & GRAPHITE	ST	Condensate	1/2" NPT	1/2" NPT	S1	-	-	15	N/A	1-1,9						
									180					A182F304	316LSS	A194-8	GRAPHITE & GRAPHITE	ST	Condensate	1/2" NPT	1/2" NPT	S1	3.5	115	15	N/A	1-1,9						
57	2-21-LG-1625A	1	STG-3IL	1" ANSI 600# RF	1530	1300	320	8x4	TB	-	-	-	-	A516GR.70	-	A193-B7	GRAPHITE & GRAPHITE	ST	Process Cond	1/2" NPT	1/2" NPT	S1, L1,M2	-	-	71	N/A	7,9,10						
									180					A1105	316LSS	A194-2H	GRAPHITE & GRAPHITE	ST	Process Cond	1/2" NPT	1/2" NPT	S1, L1,M2	47.1/FV	427/-25	71	N/A	7,9,10						
58	2-21-LG-1625B	1	STG-3IL	1" ANSI 600# RF	1530	1300	320	8x4	TB	-	-	-	-	A516GR.70	-	A193-B7	GRAPHITE & GRAPHITE	ST	Process Cond	1/2" NPT	1/2" NPT	S1, L1,M2	-	-	71	N/A	7,9,10						
									180					A105	316LSS	A194-2H	GRAPHITE & GRAPHITE	ST	Process Cond	1/2" NPT	1/2" NPT	S1, L1,M2	47.1/FV	427/-25	71	N/A	7,9,10						
59	2-21-LG-1625C	1	STG-3IL	1" ANSI 600# RF	1530	1300	320	8x4	TB	-	-	-	-	A516GR.70	-	A193-B7	GRAPHITE & GRAPHITE	ST	Process Cond	1/2" NPT	1/2" NPT	S1, L1,M2	-	-	71	N/A	7,9,10						
									180					A105	316LSS	A194-2H	GRAPHITE & GRAPHITE	ST	Process Cond	1/2" NPT	1/2" NPT	S1, L1,M2	47.1/FV	427/-25	71	N/A	7,9,10						
60	2-21-LG-1625D	1	STG-3IL	1" ANSI 600# RF	1530	1300	320	8x4	TB	-	-	-	-	A516GR.70	-	A193-B7	GRAPHITE & GRAPHITE	ST	Process Cond	1/2" NPT	1/2" NPT	S1, L1,M2	-	-	71	N/A	7,9,10						
									180					A105	316LSS	A194-2H	GRAPHITE & GRAPHITE	ST	Process Cond	1/2" NPT	1/2" NPT	S1, L1,M2	47.1/FV	427/-25	71	N/A	7,9,10						

LEVEL GAUGE SPECIFICATION

 SAMIL INDUSTRY CO., LTD.

No.	Tag No.	Qty	Model	Vessel Connection Size	C to C	Visible Length	Glass Size	Size No. Glass Sec	Hook-up / Orientation	Sp.Gr (Up/Lo)	Float Length	L	Indicator Color	Material					Fluid UP / LO	DRAIN	VENT	Options Code	P.Bar.G(A)		Temp°C		TestP.Bar.G			Page	Remark
														Gauge Body	Float	Bolt	Gasket & Gland Packing	Glass					Op.	Op.	Hyd	Pneu					
																											Valve Body	Trim	Nut		
61	2-21-LG-1611	1	SRNG-3	1" ANSI 600# RF	2350	2090	340	9x6	TB	-	-	-	-	A516GR.70	-	A193-B7	GRAPHITE & GRAPHITE	ST	Synth/Gas/ Cond	1/2" NPT	1/2" NPT	S1, F2	-	-	110	N/A	3,9				
									180					A105	316LSS	A194-2H							73	77/-25							
62	2-21-LG-1076	1	SRG-3	1" ANSI 600# RF	1030	755	250	6x3	TB	-	-	-	-	A516GR.70	-	A193-B7	GRAPHITE & GRAPHITE	ST	Nat Gas/ Cond	1/2" NPT	1/2" NPT	S1	-	-	78	N/A	4,9				
									180					A105	316LSS	A194-2H							51.5	215/-27							
63	2-21-LG-1602	1	SRNG-3	1" ANSI 600# RF	1030	755	250	6x3	TB	-	-	-	-	A516GR.70	-	A193-B7	GRAPHITE & GRAPHITE	ST	Nat Gas/ Cond	1/2" NPT	1/2" NPT	S1, F2	-	-	78	N/A	3,9				
									180					A105	316LSS	A194-2H							51.5	77/-25							
64	2-41-LG-0006	1	SMF-50A	1" ANSI 300# RF	1300	1300	-	-	-	0.923	300	310	RED & WHITE	A312TP316L	316LSS	A193-B8M	316SS/GRAP.	-	STEAM / STEAM CONDENSATE	3/4" VALVE W/ BLIND FL	3/4" NPT	S1	(3.9)	143	15	N/A	8,11				
									-					-	-	A194-8M	316SS/316SS.&-					9/FV	190/179								
65	2-41-LG-0039	1	SMF-50A	1" ANSI 300# RF	1000	1000	-	-	-	1.010	275	285	RED & WHITE	A312TP316L	316LSS	A193-B8M	316SS/GRAP.	-	OFFGAS / PROCESS CONDENSATE	3/4" VALVE W/ BLIND FL	3/4" NPT	S1	(0.887)	51	15	N/A	8,11				
									-					-	-	A194-8M	316SS/316SS.&-					3.5/FV	180/51								
66	2-41-LG-0014	1	SMF-50A	1" ANSI 300# RF	1650	1650	-	-	-	0.922	300	310	RED & WHITE	A312TP316L	316LSS	A193-B8M	316SS/GRAP.	-	STEAM / STEAM CONDENSATE	3/4" VALVE W/ BLIND FL	3/4" NPT	S1	(4)	143.6	15	N/A	8,11				
									-					-	-	A194-8M	316SS/316SS.&-					9/FV	190/179								
67	2-41-LG-0016	1	SMF-50A	1" ANSI 300# RF	600	600	-	-	-	0.893	350	360	RED & WHITE	A312TP316L	316LSS	A193-B8M	316SS/GRAP.	-	MLP STEAM / STEAM CONDENSATE	3/4" VALVE W/ BLIND FL	3/4" NPT	S1	(5.9)	165.2	19	N/A	8,11				
									-					-	-	A194-8M	316SS/316SS.&-					12.6/FV	210/194								
68	2-41-LG-0019	1	SMF-50A	1" ANSI 300# RF	1200	1200	-	-	-	1.000	275	285	RED & WHITE	A312TP316L	316LSS	A193-B8M	316SS/GRAP.	-	NH3,H2O,C02 / NH3,H2O,C02	3/4" VALVE W/ BLIND FL	3/4" NPT	S1	(ATM)	100	15	N/A	8,11				
									-					-	-	A194-8M	316SS/316SS.&-					150/-50mmWC	115								
69	2-41-LG-0021	1	SMF-50A	1" ANSI 300# RF	880	880	-	-	-	0.927	300	310	RED & WHITE	A312TP316L	316LSS	A193-B8M	316SS/GRAP.	-	NH3 +H2O / H2O	3/4" VALVE W/ BLIND FL	3/4" NPT	S1	(3.53)	116.2	15	N/A	8,11				
									-					-	-	A194-8M	316SS/316SS.&-					6.7/FV	215/142.9								
70	2-41-LG-0022	1	SMF-50A	1" ANSI 300# RF	880	880	-	-	-	0.923	300	310	RED & WHITE	A312TP316L	316LSS	A193-B8M	316SS/GRAP.	-	NH3,H2O,C02 / H2O	3/4" VALVE W/ BLIND FL	3/4" NPT	S1	(3.92)	142.9	15	N/A	8,11				
									-					-	-	A194-8M	316SS/316SS.&-					6.7/FV	215/142.9								
71	2-41-LG-0025	1	SMF-50A	1" ANSI 300# RF	830	830	-	-	-	0.876	350	360	RED & WHITE	A312TP316L	316LSS	A193-B8M	316SS/GRAP.	-	NH3,H2O,C02 / PROCESS CONDENSATE	3/4" VALVE W/ BLIND FL	3/4" NPT	S1	(14.6)	190.3	32	N/A	8,11				
									-					-	-	A194-8M	316SS/316SS.&-					21.1/FV	215/200								
72	2-41-LG-0029	1	SMF-50A	1" ANSI 300# RF	1200	1200	-	-	-	0.893	350	360	RED & WHITE	A312TP316L	316LSS	A193-B8M	316SS/GRAP.	-	STEAM / STEAM CONDENSATE	3/4" VALVE W/ BLIND FL	3/4" NPT	S1	(8.8)	174.5	19	N/A	8,11				
									-					-	-	A194-8M	316SS/316SS.&-					12.6/FV	210/194								
73	2-41-LG-0031	1	SMF-50A	1" ANSI 300# RF	900	900	-	-	-	0.855	350	360	RED & WHITE	A312TP316L	316LSS	A193-B8M	316SS/GRAP.	-	STEAM / STEAM CONDENSATE	3/4" VALVE W/ BLIND FL	3/4" NPT	S1	(19.3)	210.6	41	N/A	8,11				
									-					-	-	A194-8M	316SS/316SS.&-					27/FV	380/230								
74	2-41-LG-0032	1	SMF-50A	1" ANSI 300# RF	800	800	-	-	-	0.961	275	285	RED & WHITE	A312TP316L	316LSS	A193-B8M	316SS/GRAP.	-	STEAM CONDENSATE / STEAM CONDENSATE	3/4" VALVE W/ BLIND FL	3/4" NPT	S1	(ATM)	96	15	N/A	8,11				
									-					-	-	A194-8M	316SS/316SS.&-					300/-50mmWC	115								
75	2-41-LG-0034	1	SMF-50A	1" ANSI 300# RF	2650	2650	-	-	-	0.917	300	310	RED & WHITE	A312TP316L	316LSS	A193-B8M	316SS/GRAP.	-	STEAM / STEAM CONDENSATE	3/4" VALVE W/ BLIND FL	3/4" NPT	S1	(4.7)	149.7	15	N/A	8,11				
									-					-	-	A194-8M	316SS/316SS.&-					9/FV	190/179								
76	2-41-LG-0041	1	SMF-50A	1" ANSI 300# RF	450	450	-	-	-	1.106	225	235	RED & WHITE	A312TP316L	316LSS	A193-B8M	316SS/GRAP.	-	Air / H2O,H2SO4	3/4" VALVE W/ BLIND FL	3/4" NPT	S1	(ATM)	42	15	N/A	8,11				
									-					-	-	A194-8M	316SS/316SS.&-					6.122	115								
77	2-42-LG-0001	1	SMF-50A	1" ANSI 300# RF	5630	5630	-	-	-	1.305	200	210	RED & WHITE	A312TP316L	316LSS	A193-B8M	316SS/GRAP.	-	UREA FORMALDEHYDE / FORMALDEHYDE	3/4" VALVE W/ BLIND FL	3/4" NPT	S1	(ATM)	25	15	N/A	8,11				
									-					-	-	A194-8M	316SS/316SS.&-					ATM	77								
78	2-42-LG-0022	1	SMF-50A	1" ANSI 300# RF	750	750	-	-	-	0.923	300	310	RED & WHITE	A312TP316L	316LSS	A193-B8M	316SS/GRAP.	-	LOW PRESSURE STEAM / LOW PRESSURE STEAM CONDENSATE	3/4" VALVE W/ BLIND FL	3/4" NPT	S1	(4)	143.6	15	N/A	8,11				
									-					-	-	A194-8M	316SS/316SS.&-					9/FV	190/179								
													B L A N K																		

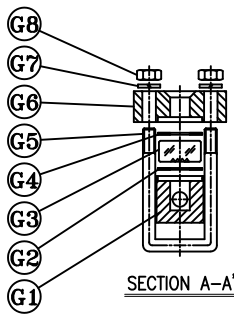
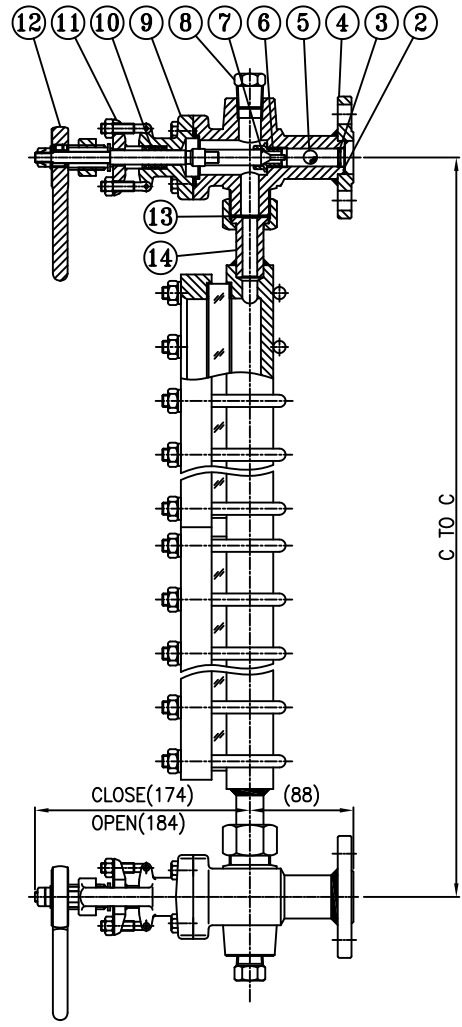
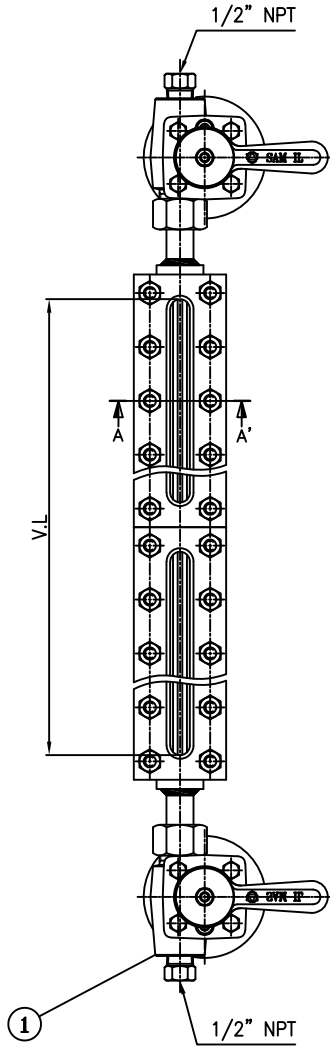


14	CONNECTION	C.S	2	
13	UNION GASKET	316LSS/GRAP./316LSS	2	3.2t
12	LEVER HANDLE	DCI450	2	
11	GLAND FLANGE	A105	2	
10	GLAND PACKING	GRAPHITE	2	
9	BONNET	A105	2	
8	PLUG	A105	2	1/2" NPT
7	STEM	A276TYPE316L	2	
6	RENEWABLE SEAT	A276TYPE316L	2	
5	CHECK BALL	A276TYPE316L	2	
4	CON'N FLANGE	A105	2	
3	RETAINER	A240TYPE316L	2	
2	UPPER VALVE BODY	A105	1	QUICK CLOSING VALVE
1	LOWER VALVE BODY	A105	1	QUICK CLOSING VALVE
NO	NAME OF PARTS	MATERIAL	Q'TY	REMARKS

G8	NUT	A194-2H	n	(Elec. Galvanized)
G7	WASHER	SWRH-62B	n	(Elec. Galvanized)
G6	GAUGE COVER	C.S	n	
G5	BOLT	A193-B7	n	(Elec. Galvanized)
G4	CUSHION GASKET	NON-ASBESTOS	n	
G3	GLASS	BOROSILICATE	n	
G2	SEALING GASKET	GRAPHITE	n	
G1	GAUGE BODY	A516GR.70	1	
NO	NAME OF PARTS	MATERIAL	Q'TY	REMARKS

③				
②				
①				
①	2021.02.04	K.K.S	K.C.I	H.G.H
REV.	DATE	DES'ND	REV'D	APP'D

<p>SAM IL INDUSTRY CO., LTD. 44B-12L, #434-12, NONHYUN-DONG, NAMDONG-KU, INCHEON, KOREA.</p>			
MODEL NO.	SRG-1 & SRG-2	PAGE	1
TITLE	REFLEX TYPE LEVEL GAUGE		
DWG.NO.	SQ-D200727-01D1	SCALE	N/S

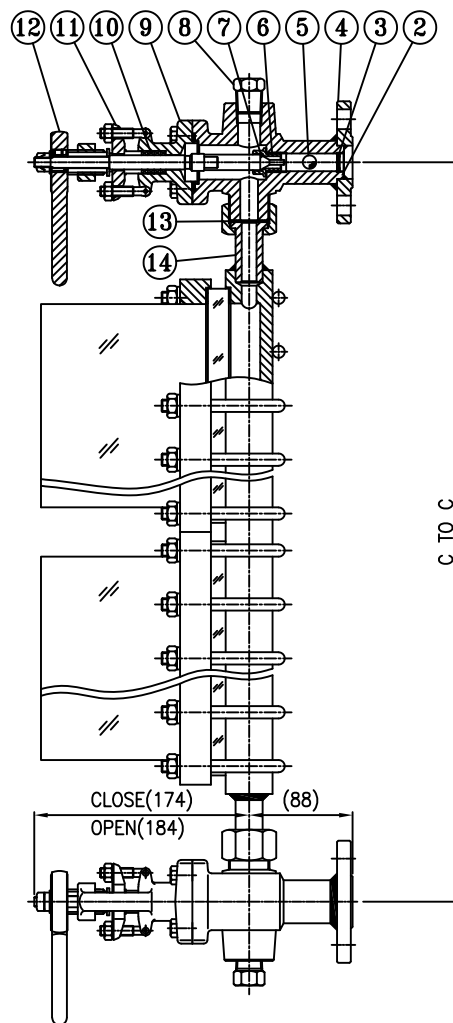
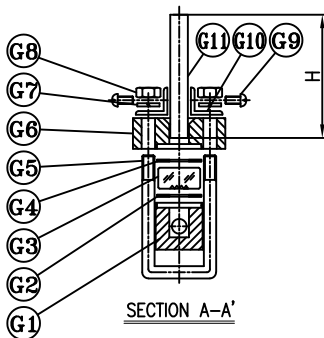
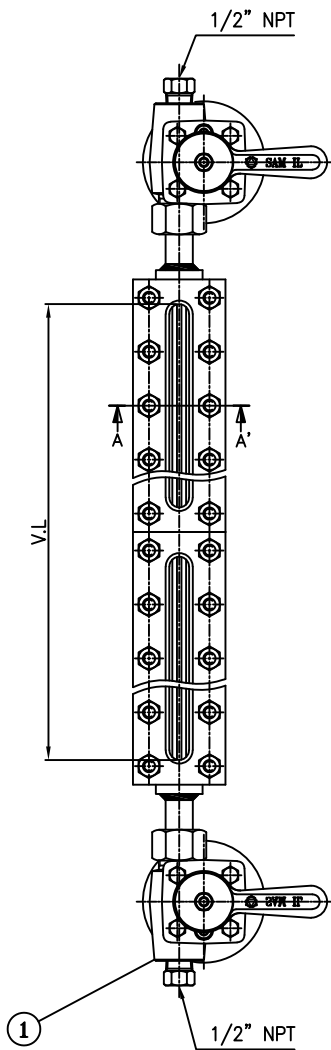


14	CONNECTION	A276TYPE304	2	
13	UNION GASKET	316LSS/GRAP./316LSS	2	3.2t
12	LEVER HANDLE	DCI450	2	
11	GLAND FLANGE	A182F304	2	
10	GLAND PACKING	GRAPHITE	2	
9	BONNET	A182F304	2	
8	PLUG	A276TYPE304	4	1/2" NPT
7	STEM	A276TYPE316L	2	
6	RENEWABLE SEAT	A276TYPE316L	2	
5	CHECK BALL	A276TYPE316L	2	
4	CON'N FLANGE	A182F304	2	
3	RETAINER	A240TYPE316L	2	
2	UPPER VALVE BODY	A182F304	1	QUICK CLOSING VALVE
1	LOWER VALVE BODY	A182F304	1	QUICK CLOSING VALVE

NO	NAME OF PARTS	MATERIAL	Q'TY	REMARKS
G8	NUT	A194-8	n	
G7	WASHER	304SS	n	
G6	GAUGE COVER	304SS	n	
G5	BOLT	A193-B8	n	
G4	CUSHION GASKET	NON-ASBESTOS	n	
G3	GLASS	BOROSILICATE	n	
G2	SEALING GASKET	GRAPHITE	n	
G1	GAUGE BODY	A276TYPE304	1	

③				
②				
①				
①	2021.02.04	K.K.S	K.C.I	H.G.H
REV.	DATE	DES'ND	REV'D	APP'D

<p>SAM IL INDUSTRY CO., LTD. 44B-12L, #434-12, NONHYUN-DONG, NAMDONG-KU, INCHEON, KOREA.</p>			
MODEL NO.	SRG-1 & SRG-2	PAGE	1-1
TITLE	REFLEX TYPE LEVEL GAUGE		
DWG.NO.	SQ-D200727-01D1	SCALE	N/S



NON FROSTING DIMENSION


NO.	H	TEMP (°C)	REMARKS (CLOSE/OPEN)
F1	75	0 ~ -20	
F2	100	-21 ~ -45	
F3	150	-46 ~ -100	
F4	200	-101 ~ -160	
F5	250	-161 ~	

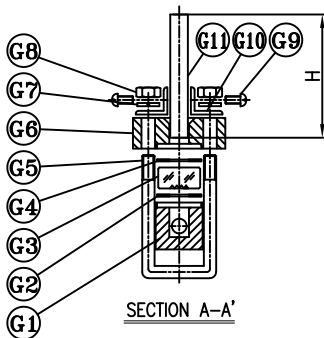
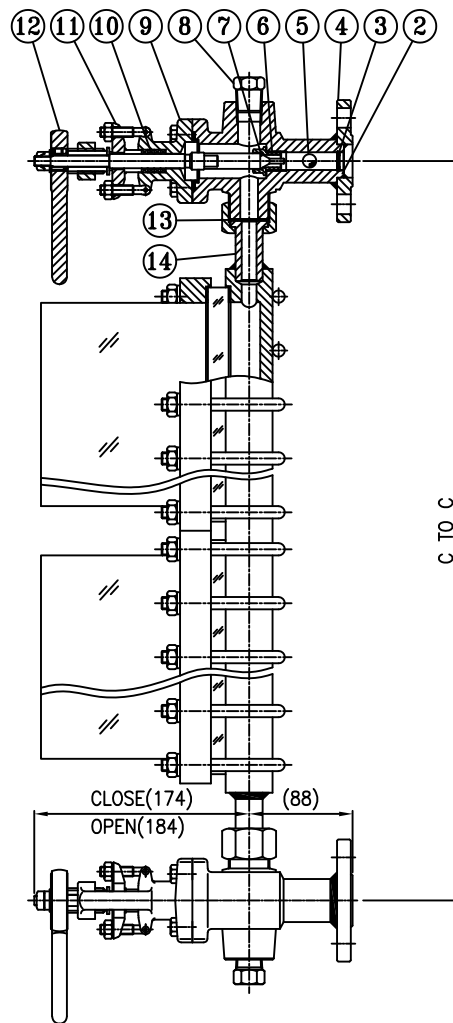
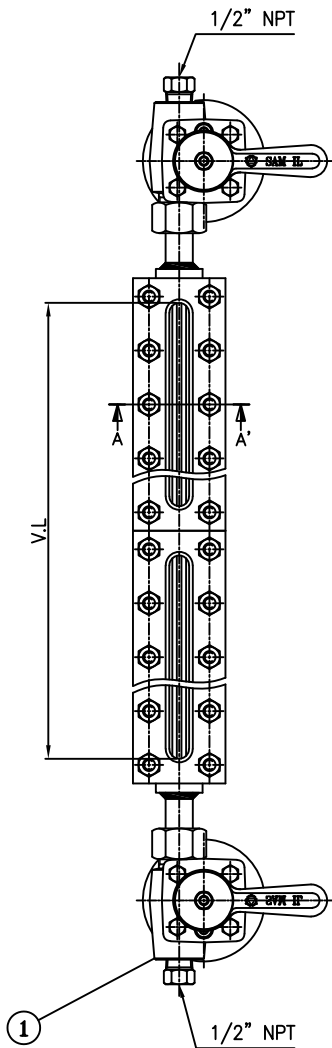


NO	NAME OF PARTS	MATERIAL	Q'TY	REMARKS
G11	NON FROSTING PLATE	ACRYL	n	
G10	ANGLE	304SS	n	
G9	BIS BOLT	304SS	n	
G8	NUT	A194-4	2n	(Elec. Galvanized)
G7	WASHER	SWRH-62B	2n	(Elec. Galvanized)
G6	GAUGE COVER	L.T.C.S	n	
G5	BOLT	A320-L7	n	(Elec. Galvanized)
G4	CUSHION GASKET	NON-ASBESTOS	n	
G3	GLASS	BOROSILICATE	n	
G2	SEALING GASKET	GRAPHITE	n	
G1	GAUGE BODY	A516GR.70	1	

NO	NAME OF PARTS	MATERIAL	Q'TY	REMARKS
14	CONNECTION	L.T.C.S	2	
13	UNION GASKET	316LSS/GRAP./316LSS	2	3.2t
12	LEVER HANDLE	DCI450	2	
11	GLAND FLANGE	A350LF2	2	
10	GLAND PACKING	GRAPHITE	2	
9	BONNET	A350LF2	2	
8	STEM	A276TYPE316L	2	
7	PLUG	A350LF2	2	1/2" NPT
6	RENEWABLE SEAT	A276TYPE316L	2	
5	CHECK BALL	A276TYPE316L	2	
4	CON'N FLANGE	A350LF2	2	
3	RETAINER	A240TYPE316L	2	
2	UPPER VALVE BODY	A350LF2	1	QUICK CLOSING VALVE
1	LOWER VALVE BODY	A350LF2	1	QUICK CLOSING VALVE

③				
②				
①				
④	2021.02.04	K.K.S	K.C.I	H.G.H
REV.	DATE	DES'ND	REV'D	APP'D

 SAM IL INDUSTRY CO., LTD. 44B-12L, #434-12, NONHYUN-DONG, NAMDONG-KU, INCHEON, KOREA.			
MODEL NO.	SRNG-1 & SRNG-2	PAGE	2
TITLE	REFLEX TYPE LEVEL GAUGE		
DWG.NO.	SQ-D200727-01D1	SCALE	N/S



NON FROSTING DIMENSION


NO.	H	TEMP (°C)	REMARKS (CLOSE/OPEN)
F1	75	0 ~ -20	
F2	100	-21 ~ -45	
F3	150	-46 ~ -100	
F4	200	-101 ~ -160	
F5	250	-161 ~	

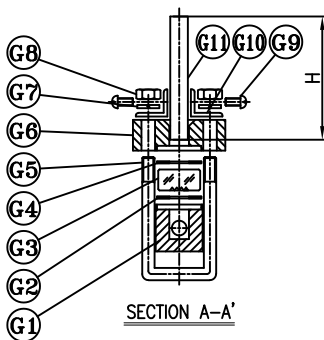
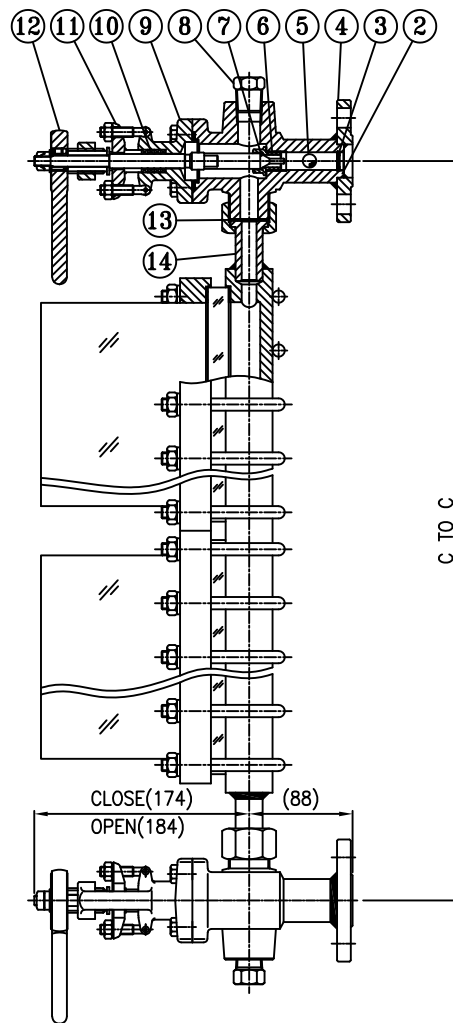
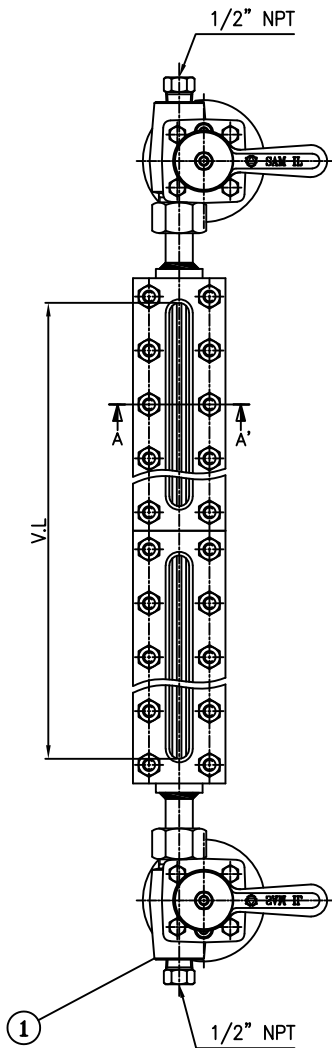
→SAM I

NO	NAME OF PARTS	MATERIAL	Q'TY	REMARKS
G11	NON FROSTING PLATE	ACRYL	n	
G10	ANGLE	304SS	n	
G9	BIS BOLT	304SS	n	
G8	NUT	A194-2H	2n	(Elec. Galvanized)
G7	WASHER	SWRH-62B	2n	(Elec. Galvanized)
G6	GAUGE COVER	C.S	n	
G5	BOLT	A193-B7	n	(Elec. Galvanized)
G4	CUSHION GASKET	NON-ASBESTOS	n	
G3	GLASS	BOROSILICATE	n	
G2	SEALING GASKET	GRAPHITE	n	
G1	GAUGE BODY	A516GR.70	1	

NO	NAME OF PARTS	MATERIAL	Q'TY	REMARKS
14	CONNECTION	C.S	2	
13	UNION GASKET	316LSS/GRAP./316LSS	2	3.2t
12	LEVER HANDLE	DCI450	2	
11	GLAND FLANGE	A105	2	
10	GLAND PACKING	GRAPHITE	2	
9	BONNET	A105	2	
8	STEM	A276TYPE316L	2	
7	PLUG	A105	2	1/2" NPT
6	RENEWABLE SEAT	A276TYPE316L	2	
5	CHECK BALL	A276TYPE316L	2	
4	CON'N FLANGE	A105	2	
3	RETAINER	A240TYPE316L	2	
2	UPPER VALVE BODY	A105	1	QUICK CLOSING VALVE
1	LOWER VALVE BODY	A105	1	QUICK CLOSING VALVE

REV.	DATE	DES'ND	REV'D	APP'D
③				
②				
①				
①	2021.02.04	K.K.S	K.C.I	H.G.H

 SAM IL INDUSTRY CO., LTD. 44B-12L, #434-12, NONHYUN-DONG, NAMDONG-KU, INCHEON, KOREA.			
MODEL NO.	SRNG-1 & SRNG-2	PAGE	2-1
TITLE	REFLEX TYPE LEVEL GAUGE		
DWG.NO.	SQ-D200727-01D1	SCALE	N/S




NON FROSTING DIMENSION

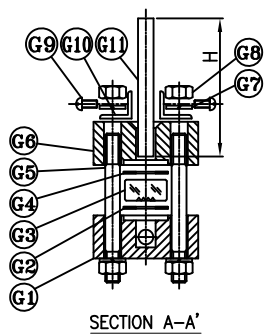
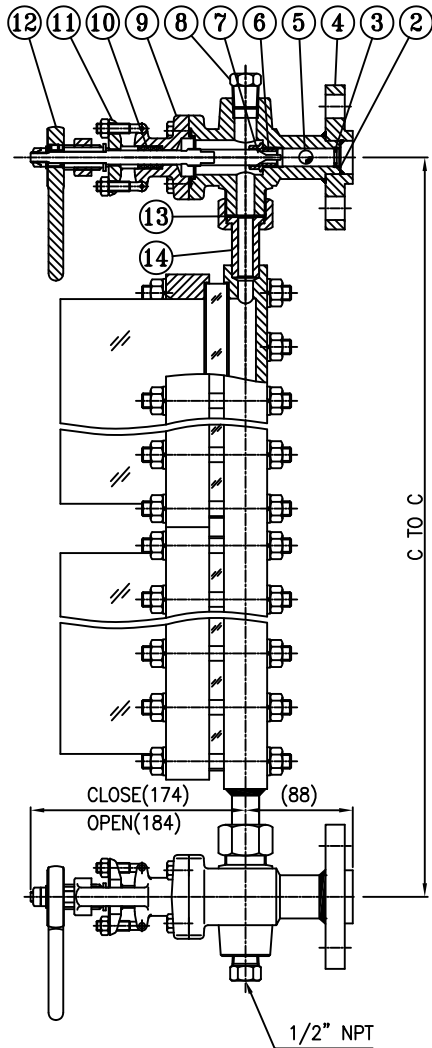
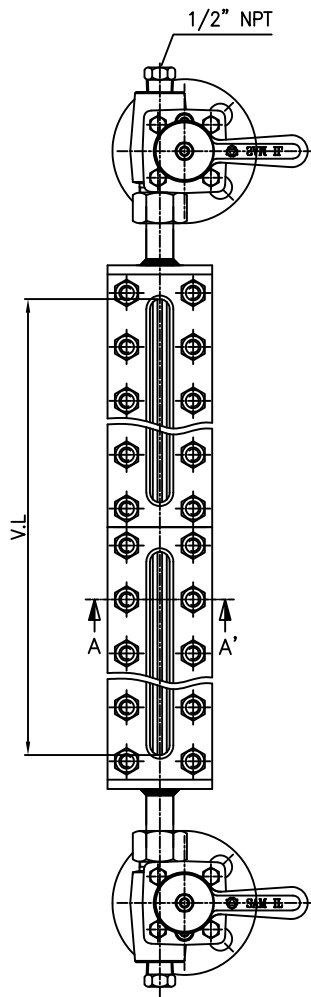
NO.	H	TEMP (°C)	REMARKS (CLOSE/OPEN)
F1	75	0 ~ -20	
F2	100	-21 ~ -45	
F3	150	-46 ~ -100	
F4	200	-101 ~ -160	
F5	250	-161 ~	

NO	NAME OF PARTS	MATERIAL	Q'TY	REMARKS
G11	NON FROSTING PLATE	ACRYL	n	
G10	ANGLE	304SS	n	
G9	BIS BOLT	304SS	n	
G8	NUT	A194-8	2n	
G7	WASHER	304SS	2n	
G6	GAUGE COVER	304SS	n	
G5	BOLT	A193-B8	n	
G4	CUSHION GASKET	NON-ASBESTOS	n	
G3	GLASS	BOROSILICATE	n	
G2	SEALING GASKET	GRAPHITE	n	
G1	GAUGE BODY	A276TYPE304	1	

NO	NAME OF PARTS	MATERIAL	Q'TY	REMARKS
14	CONNECTION	A276TYPE304	2	
13	UNION GASKET	316LSS/GRAP./316LSS	2	3.2t
12	LEVER HANDLE	DCI450	2	
11	GLAND FLANGE	A276TYPE304	2	
10	GLAND PACKING	GRAPHITE	2	
9	BONNET	A276TYPE304	2	
8	STEM	A276TYPE316L	2	
7	PLUG	A276TYPE304	2	1/2" NPT
6	RENEWABLE SEAT	A276TYPE316L	2	
5	CHECK BALL	A276TYPE316L	2	
4	CON'N FLANGE	A182F304	2	
3	RETAINER	A240TYPE316L	2	
2	UPPER VALVE BODY	A182F304	1	QUICK CLOSING VALVE
1	LOWER VALVE BODY	A182F304	1	QUICK CLOSING VALVE

③				
②				
①				
④	2021.02.04	K.K.S	K.C.I	H.G.H
REV.	DATE	DES'ND	REV'D	APP'D

 SAM IL INDUSTRY CO., LTD. 44B-12L, #434-12, NONHYUN-DONG, NAMDONG-KU, INCHEON, KOREA.			
MODEL NO.	SRNG-1 & SRNG-2	PAGE	2-2
TITLE	REFLEX TYPE LEVEL GAUGE		
DWG.NO.	SQ-D200727-01D1	SCALE	N/S



NON FROSTING DIMENSION

NO.	H	TEMP (°C)	REMARKS (CLOSE/OPEN)
F1	75	0 ~ -20	
F2	100	-21 ~ -45	
F3	150	-46 ~ -100	
F4	200	-101 ~ -160	
F5	250	-161 ~	

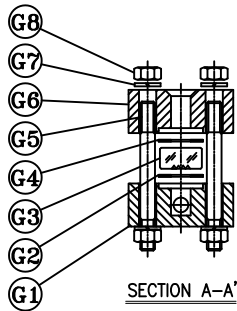
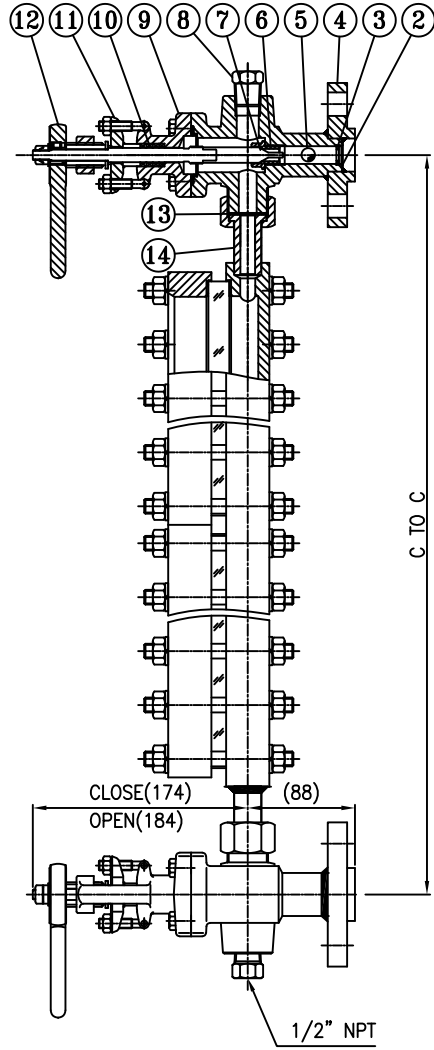
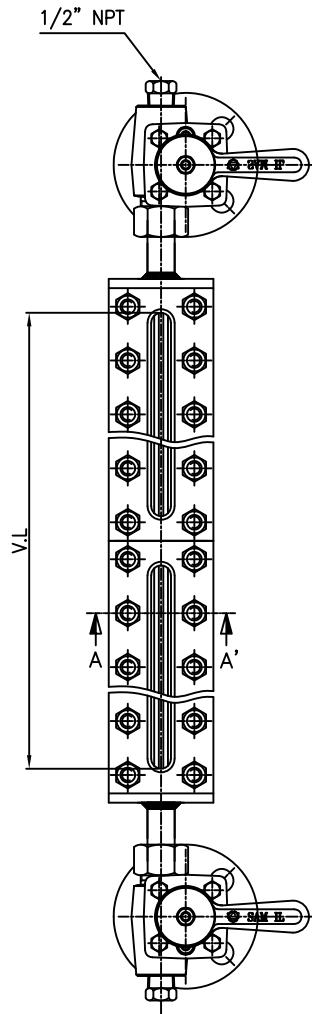
SAM II

NO	NAME OF PARTS	MATERIAL	Q'TY	REMARKS
G11	NON FROSTING PLATE	ACRYL	n	
G10	ANGLE	304SS	n	
G9	BIS BOLT	304SS	n	
G8	NUT	A194-2H	2n	(Elec. Galvanized)
G7	WASHER	SWRH-62B	2n	(Elec. Galvanized)
G6	GAUGE COVER	C.S	n	
G5	BOLT	A193-B7	n	(Elec. Galvanized)
G4	CUSHION GASKET	NON-ASBESTOS	n	
G3	GLASS	BOROSILICATE	n	
G2	SEALING GASKET	GRAPHITE	n	
G1	GAUGE BODY	A516GR.70	1	

NO	NAME OF PARTS	MATERIAL	Q'TY	REMARKS
14	CONNECTION	C.S	2	
13	UNION GASKET	316LSS/GRAP./316LSS	2	3.2t
12	LEVER HANDLE	DCI450	2	
11	GLAND FLANGE	A105	2	
10	GLAND PACKING	GRAPHITE	2	
9	BONNET	A105	2	
8	STEM	A276TYPE316L	2	
7	PLUG	A276TYPE304	2	1/2" NPT
6	RENEWABLE SEAT	A276TYPE316L	2	
5	CHECK BALL	A276TYPE316L	2	
4	CON'N FLANGE	A105	2	
3	RETAINER	A240TYPE316L	2	
2	UPPER VALVE BODY	A105	1	QUICK CLOSING VALVE
1	LOWER VALVE BODY	A105	1	QUICK CLOSING VALVE

REV.	DATE	DES'ND	REV'D	APP'D
3				
2				
1				
0	2021.02.04	K.K.S	K.C.I	H.G.H

SAM IL INDUSTRY CO., LTD. 44B-12L, #434-12, NONHYUN-DONG, NAMDONG-KU, INCHEON, KOREA.			
MODEL NO.	SRNG-3 & SRNG-4	PAGE	3
TITLE	REFLEX TYPE LEVEL GAUGE		
DWG.NO.	SQ-D200727-01D1	SCALE	N/S

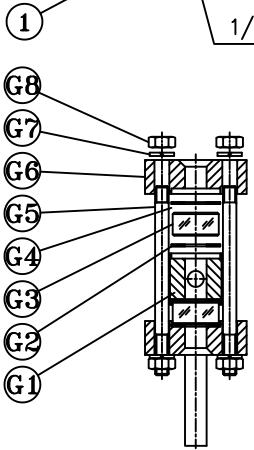
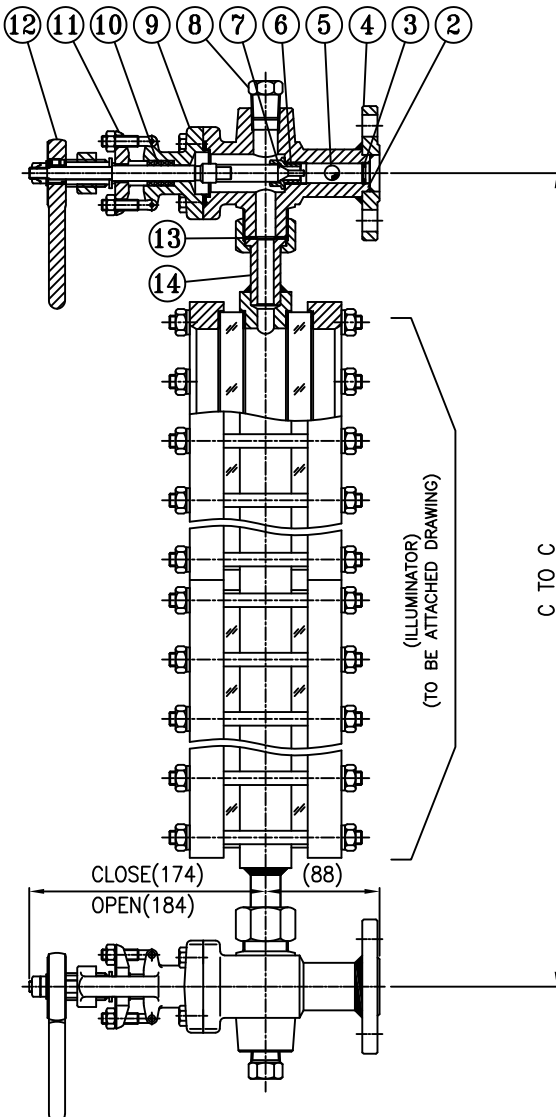
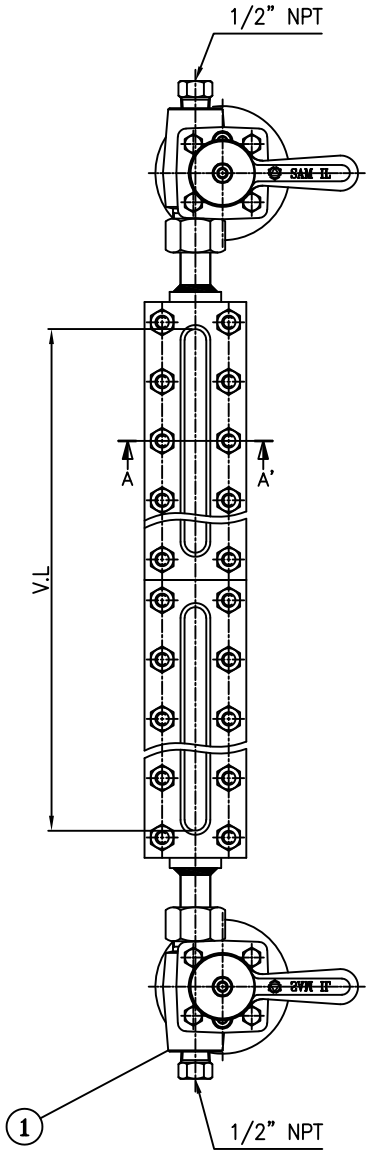


14	CONNECTION	C.S	2	
13	UNION GASKET	316LSS/GRAP./316LSS	2	3.2t
12	LEVER HANDLE	DCI450	2	
11	GLAND FLANGE	A105	2	
10	GLAND PACKING	GRAPHITE	2	
9	BONNET	A105	2	
8	STEM	A276TYPE316L	2	
7	PLUG	A276TYPE304	2	1/2" NPT
6	RENEWABLE SEAT	A276TYPE316L	2	
5	CHECK BALL	A276TYPE316L	2	
4	CON'N FLANGE	A105	2	
3	RETAINER	A240TYPE316L	2	
2	UPPER VALVE BODY	A105	1	QUICK CLOSING VALVE
1	LOWER VALVE BODY	A105	1	QUICK CLOSING VALVE
NO	NAME OF PARTS	MATERIAL	Q'TY	REMARKS

G8	NUT	A194-2H	n	(Elec. Galvanized)
G7	WASHER	SWRH-62B	n	(Elec. Galvanized)
G6	GAUGE COVER	C.S	n	
G5	BOLT	A193-B7	n	(Elec. Galvanized)
G4	CUSHION GASKET	NON-ASBESTOS	n	
G3	GLASS	BOROSILICATE	n	
G2	SEALING GASKET	GRAPHITE	n	
G1	GAUGE BODY	A516GR.70	1	
NO	NAME OF PARTS	MATERIAL	Q'TY	REMARKS

③				
②				
①				
①	2021.02.04	K.K.S	K.C.I	H.G.H
REV.	DATE	DES'ND	REV'D	APP'D

<p>SAM IL INDUSTRY CO., LTD. 44B-12L, #434-12, NONHYUN-DONG, NAMDONG-KU, INCHEON, KOREA.</p>			
MODEL NO.	SRNG-3 & SRNG-4	PAGE	4
TITLE	REFLEX TYPE LEVEL GAUGE		
DWG.NO.	SQ-D200727-01D1	SCALE	N/S



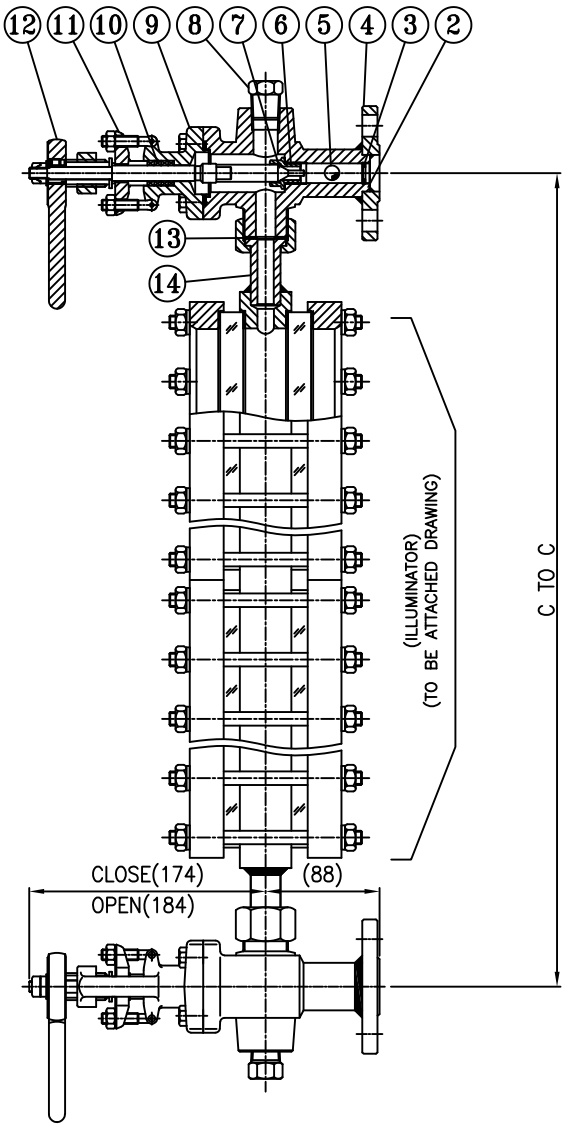
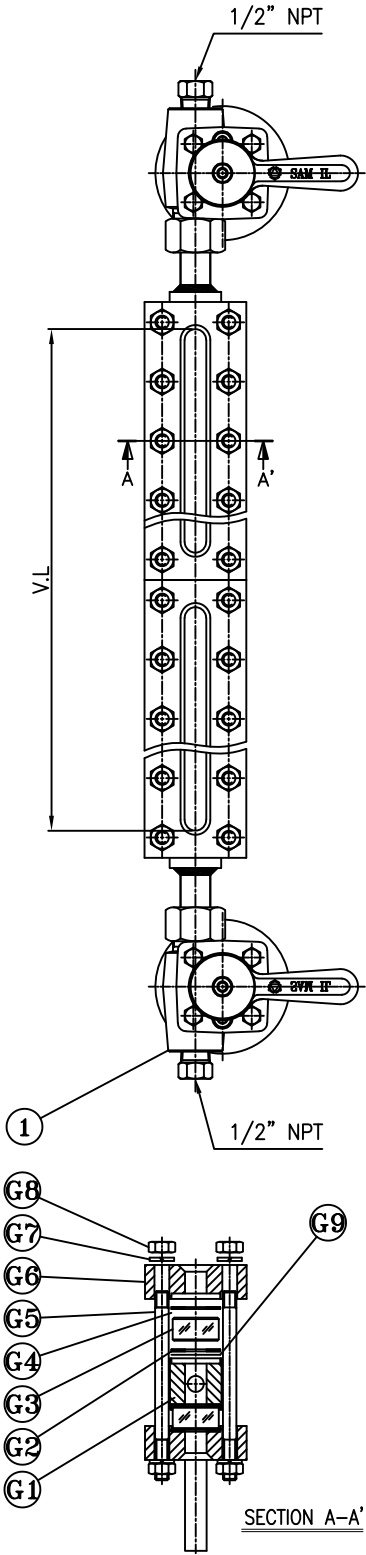
SECTION A-A'

14	NEEDLE VALVE	A105	1	1/2" NPT
13	CONNECTION	C.S	2	
12	UNION GASKET	316LSS/GRAP./316LSS	2	3.2t
11	GLAND NUT	C.S	2	
10	GLAND PACKING	TEFLON	2	
9	BONNET	C.S	2	
8	PLUG	A105	2	1/2" NPT
7	STEM	A276TYPE316L	2	
6	RENEWABLE SEAT	A276TYPE316L	2	
5	CHECK BALL	A276TYPE316L	2	
4	CON'N FLANGE	A105	2	
3	RETAINER	A240TYPE316L	2	
2	UPPER VALVE BODY	A105	1	
1	LOWER VALVE BODY	A105	1	
NO.	NAME OF PARTS	MATERIAL	Q'TY	REMARKS

G8	NUT	A194-2H	n	(Elec.Galvanized)
G7	WASHER	SWRH-62B	n	(Elec.Galvanized)
G6	GAUGE COVER	C.S	n	
G5	BOLT	A193-B7	n	(Elec.Galvanized)
G4	CUSHION GASKET	NON ASBESTOS	n	
G3	GLASS	BOROSILICATE	n	
G2	SEALING GASKET	NON ASBESTOS	n	
G1	GAUGE BODY	C.S	1	
NO.	NAME OF PARTS	MATERIAL	Q'TY	REMARKS

△4				
△3				
△2				
△1	2021.02.04	K.K.S	K.C.I	H.G.H
REV.	DATE	DES'ND	REV'D	APP'D


<p>SAM IL INDUSTRY CO., LTD. 44B-12L, #434-12, NONHYUN-DONG, NAMDONG-KU, INCHEON, KOREA.</p>			
MODEL NO.	STG-1 & 2	PAGE	5
TITLE	TRANSPARENT TYPE LEVEL GAUGE		
DWG.NO.	SQ-D200727-01D1	SCALE	N/S



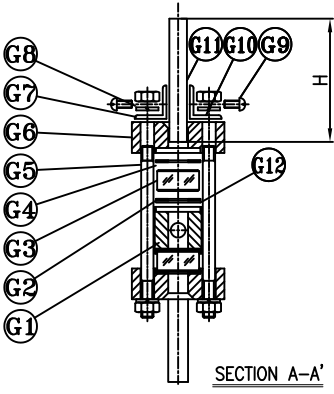
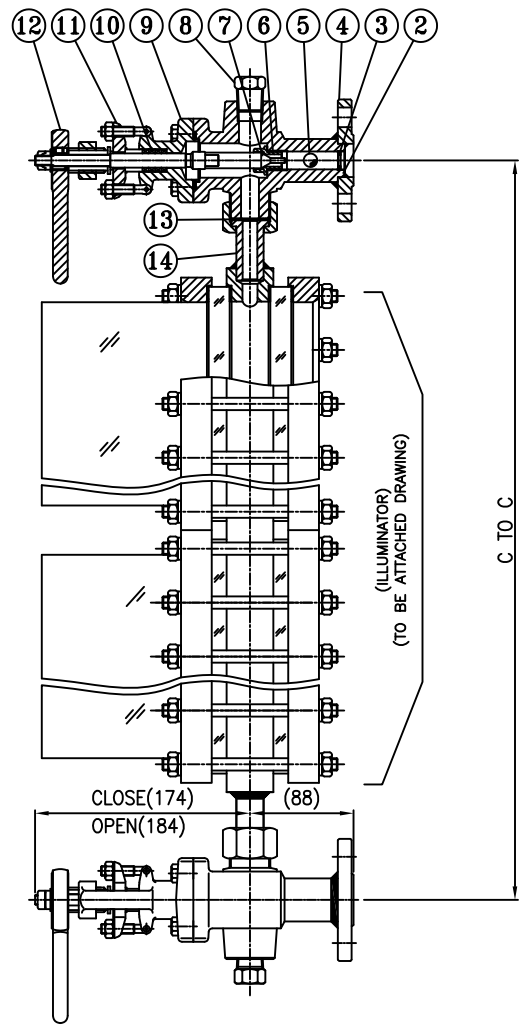
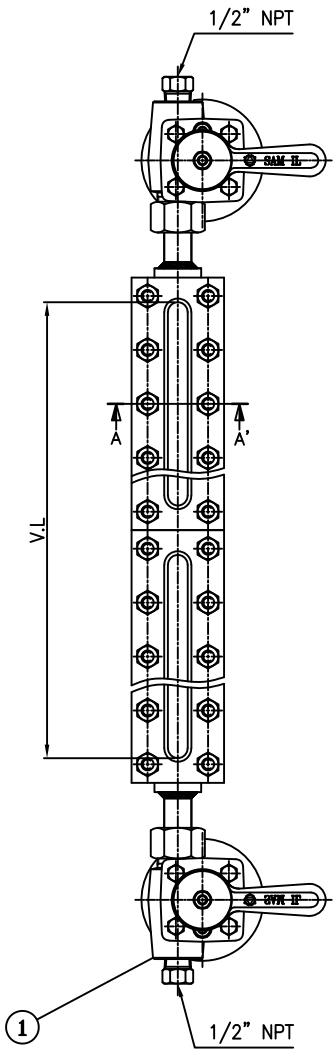
14	NEEDLE VALVE	A105	1	1/2" NPT
13	CONNECTION	C.S	2	
12	UNION GASKET	316LSS/GRAP./316LSS	2	3.2t
11	GLAND NUT	C.S	2	
10	GLAND PACKING	TEFLON	2	
9	BONNET	C.S	2	
8	PLUG	A105	2	1/2" NPT
7	STEM	A276TYPE316L	2	
6	RENEWABLE SEAT	A276TYPE316L	2	
5	CHECK BALL	A276TYPE316L	2	
4	CON'N FLANGE	A105	2	
3	RETAINER	A240TYPE316L	2	
2	UPPER VALVE BODY	A105	1	
1	LOWER VALVE BODY	A105	1	
NO.	NAME OF PARTS	MATERIAL	Q'TY	REMARKS

G9	SHIELD	MICA	n	
G8	NUT	A194-2H	n	(Elec.Galvanized)
G7	WASHER	SWRH-62B	n	(Elec.Galvanized)
G6	GAUGE COVER	C.S	n	
G5	BOLT	A193-B7	n	(Elec.Galvanized)
G4	CUSHION GASKET	NON ASBESTOS	n	
G3	GLASS	BOROSILICATE	n	
G2	SEALING GASKET	NON ASBESTOS	n	
G1	GAUGE BODY	C.S	1	
NO.	NAME OF PARTS	MATERIAL	Q'TY	REMARKS

△				
△				
△				
△	2021.02.04	K.K.S	K.C.I	H.G.H
REV.	DATE	DES'ND	REV'D	APP'D


SAM IL INDUSTRY CO., LTD.
 44B-12L, #434-12, NONHYUN-DONG, NAMDONG-KU,
 INCHEON, KOREA.

MODEL NO.	STG-1 & 2	PAGE	5-1
TITLE	TRANSPARENT TYPE LEVEL GAUGE		
DWG.NO.	SQ-D200727-01D1	SCALE	N/S




NON FROSTING DIMENSION

NO.	H	TEMP (°C)	REMARKS (CLOSE/OPEN)
F1	75	0 ~ -20	
F2	100	-21 ~ -45	
F3	150	-46 ~ -100	
F4	200	-101 ~ -160	
F5	250	-161 ~	

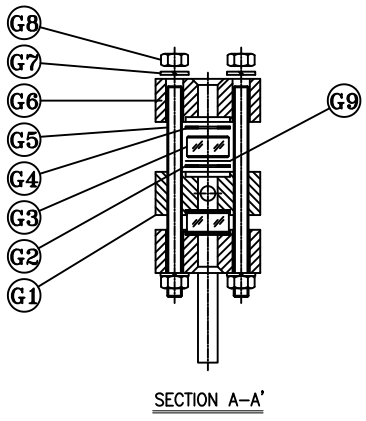
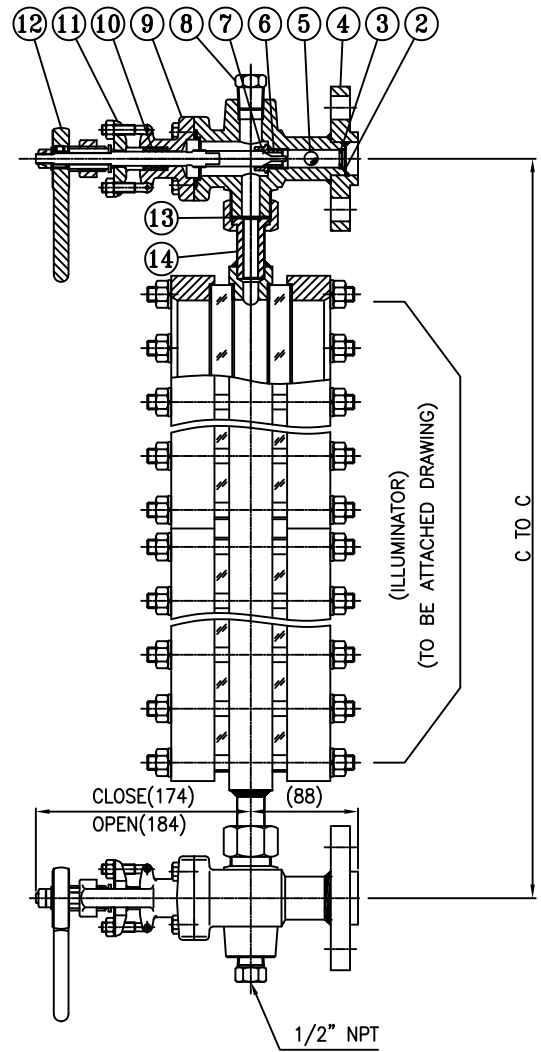
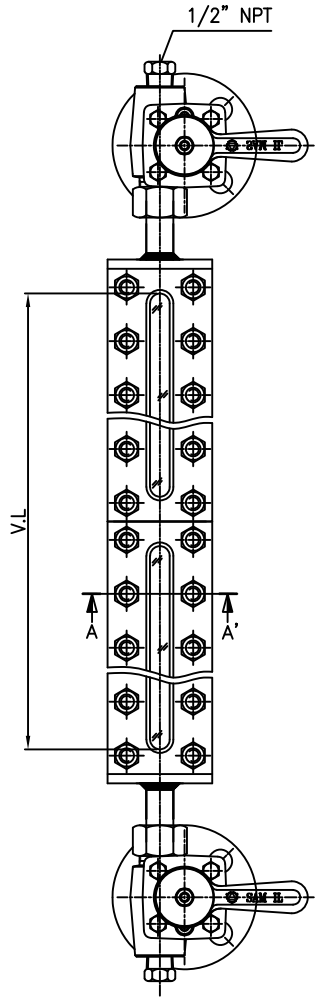
NO	NAME OF PARTS	MATERIAL	Q'TY	REMARKS
G12	SHIELD	MICA	n	
G11	NON FROSTING PLATE	ACRYL	n	
G10	ANGLE	304SS	n	
G9	BIS BOLT	304SS	n	
G8	NUT	A194-8	2n	
G7	WASHER	304SS	2n	
G6	GAUGE COVER	304SS	n	
G5	BOLT	A193-B8	n	
G4	CUSHION GASKET	NON-ASBESTOS	n	
G3	GLASS	BOROSILICATE	n	
G2	SEALING GASKET	GRAPHITE	n	
G1	GAUGE BODY	A276TYPE304	1	

NO	NAME OF PARTS	MATERIAL	Q'TY	REMARKS
14	CONNECTION	A276TYPE304	2	
13	UNION GASKET	316LSS/GRAP./316LSS	2	
12	LEVER HANDLE	DCI450	2	
11	GLAND FLANGE	A182F304	2	
10	GLAND PACKING	GRAPHITE	2	
9	BONNET	A276TYPE304	2	
8	STEM	A276TYPE316L	2	
7	PLUG	A276TYPE304	2	1/2" NPT
6	RENEWABLE SEAT	A276TYPE316L	2	
5	CHECK BALL	A276TYPE316L	2	
4	CON'N FLANGE	A182F304	2	
3	RETAINER	A240TYPE316L	2	
2	UPPER VALVE BODY	A182F304	1	QUICK CLOSING VALVE
1	LOWER VALVE BODY	A182F304	1	QUICK CLOSING VALVE

REV.	DATE	DES'ND	REV'D	APP'D
3				
2				
1	2021.02.04	K.K.S	K.C.I	H.G.H


SAM IL INDUSTRY CO., LTD.
 44B-12L, #434-12, NONHYUN-DONG, NAMDONG-KU, INCHEON, KOREA.


MODEL NO.	STNG-11L & STNG-21L	PAGE	6
TITLE	TRANSPARENT TYPE LEVEL GAUGE		
DWG.NO.	SQ-D200727-01D1	SCALE	N/S

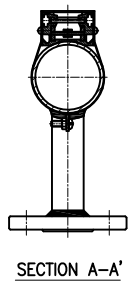
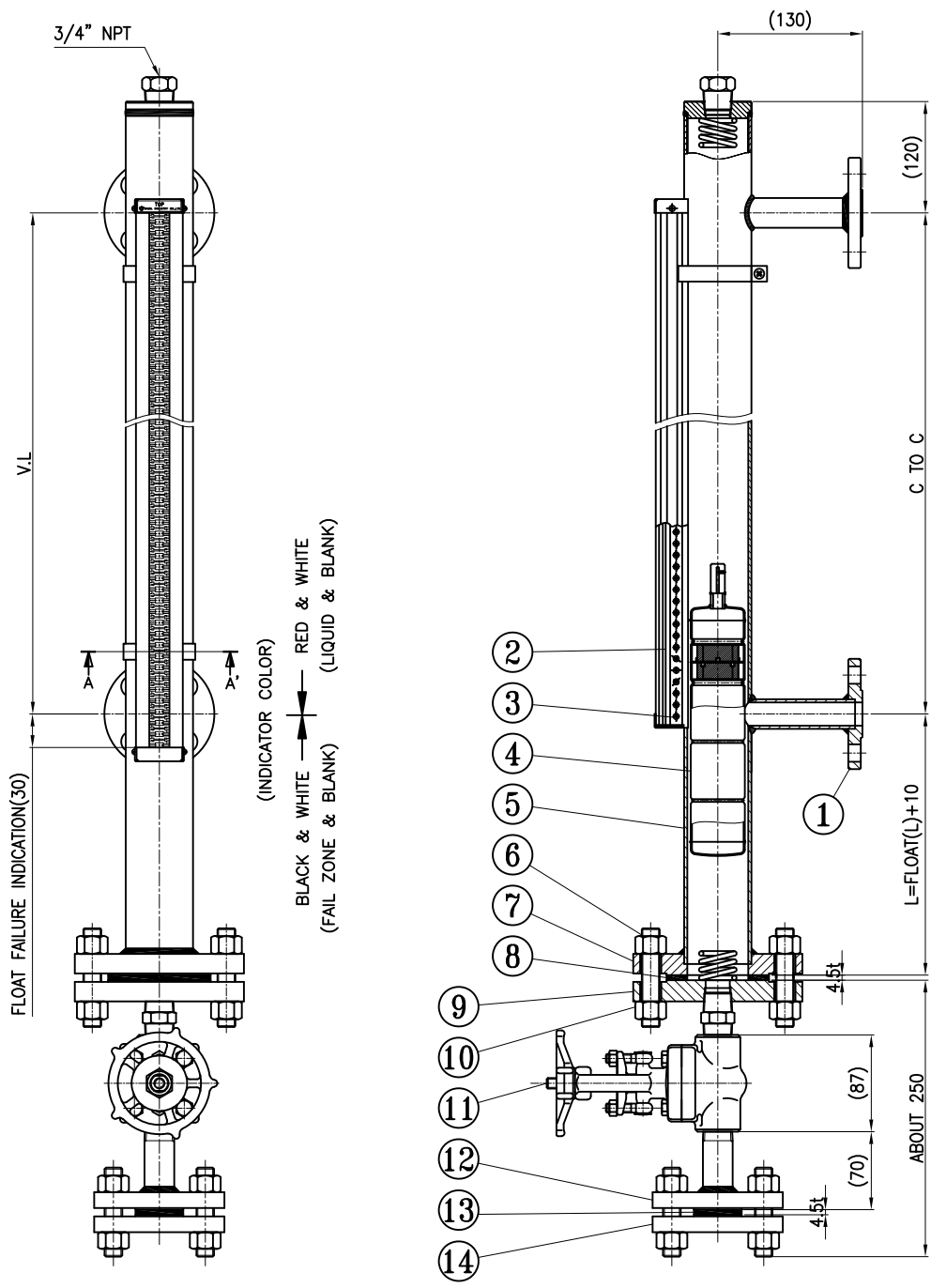


14	CONNECTION	C.S	2	
13	UNION GASKET	316LSS/GRAP./316LSS	2	3.2t
12	LEVER HANDLE	DCI450	2	
11	GLAND FLANGE	A105	2	
10	GLAND PACKING	GRAPHITE	2	
9	BONNET	A105	2	
8	STEM	A276TYPE316L	2	
7	PLUG	A105	2	1/2" NPT
6	RENEWABLE SEAT	A276TYPE316L	2	
5	CHECK BALL	A276TYPE316L	2	
4	CON'N FLANGE	A105	2	
3	RETAINER	A240TYPE316L	2	
2	UPPER VALVE BODY	A105	1	QUICK CLOSING VALVE
1	LOWER VALVE BODY	A105	1	QUICK CLOSING VALVE
NO	NAME OF PARTS	MATERIAL	Q'TY	REMARKS

G9	SHIELD	MICA	n	
G8	NUT	A194-2H	n	
G7	WASHER	SWRH-62B	n	
G6	GAUGE COVER	C.S	n	
G5	BOLT	A193-B7	n	
G4	CUSHION GASKET	NON-ASBESTOS	n	
G3	GLASS	BOROSILICATE	n	
G2	SEALING GASKET	GRAPHITE	n	
G1	GAUGE BODY	A516GR.70	1	
NO	NAME OF PARTS	MATERIAL	Q'TY	REMARKS

③				
②				
①				
①	2021.02.04	K.K.S	K.C.I	H.G.H
REV.	DATE	DES'ND	REV'D	APP'D

 SAM IL INDUSTRY CO., LTD. 44B-12L, #434-12, NONHYUN-DONG, NAMDONG-KU, INCHEON, KOREA.			
MODEL NO.	STG-3IL & STG-4IL	PAGE	7
TITLE	TRANSPARENT TYPE LEVEL GAUGE		
DWG.NO.	SQ-D200727-01D1	SCALE	N/S



NO	NAME OF PARTS	MATERIAL	Q'TY	REMARKS
13	BLIND FLANGE	A182F316L	1	3/4" ANSI 300# RF
12	FLANGE	A182F316L	1	3/4" ANSI 300# RF
11	GATE VALVE	A182F316L/316LSS	1	3/4" NPT
10	NUT	A194-8M	2n	
9	FLANGE	A182F316L	1	2" ANSI 300# RF
8	SPIRAL WOUND GASKET	316SS/GRAP./316SS/316SS	1	4.5t
7	FLANGE	A182F316L	1	2" ANSI 300# RF
6	BOLT	A193-B8M	n	
5	COLUMN	A312TP316L	1	
4	FLOAT	316LSS	1	
3	MAGNETIC ROLLER	MAGNETIC	1Lot	
2	INDICATOR CASE	ALUMINUM	1Lot	
1	CON'N FLANGE	A182F316L	2	1" ANSI 300# RF

△3				
△2				
△1				
△0	2020.02.04	K.K.S	K.C.I	H.G.H
REV.	DATE	DES'ND	REV'D	APP'D

<p>SAM IL INDUSTRY CO., LTD. 44B-12L, #434-12, NONHYUN-DONG, NAMDONG-KU, INCHEON, KOREA.</p>			
MODEL NO.	SMF-50A	PAGE	8
TITLE	MAGNETIC FLOAT TYPE		
DWG.NO.	316SS-20A-GA (300#)	SCALE	N/S